



Directed Reading for  
Content Mastery

Section 1 ■ The Nervous  
System

p. 600-608

**Directions:** Match the terms in Column II with the descriptions in Column I. Write the letter of the correct term in the blank at the left.

Column I

- \_\_\_\_\_ 1. a small space across which an impulse travels to move from one neuron to another
- \_\_\_\_\_ 2. the system made up of the brain and spinal cord
- \_\_\_\_\_ 3. the system made up of all the nerves outside the brain and spinal cord
- \_\_\_\_\_ 4. the branch part of a neuron that receives messages and sends them to the cell body
- \_\_\_\_\_ 5. the branch part of a neuron that transports messages away from the cell body
- \_\_\_\_\_ 6. a nerve cell
- \_\_\_\_\_ 7. a movement caused by the spinal cord interpreting an impulse from sensory receptors
- \_\_\_\_\_ 8. the part of the body made up of bundles of neurons that carry impulses from all parts of the body to the brain and from the brain to all parts of the body
- \_\_\_\_\_ 9. regulation of steady, life-maintaining conditions inside an organism
- \_\_\_\_\_ 10. largest part of the brain
- \_\_\_\_\_ 11. coordinates voluntary muscle movements

Column II

- a. homeostasis
- b. cerebrum
- c. dendrite
- d. axon
- e. spinal cord
- f. central nervous system
- g. peripheral nervous system
- h. cerebellum
- i. neuron
- j. reflex
- k. synapse



Directed Reading for  
Content Mastery

**Overview**  
**Control and Coordination**

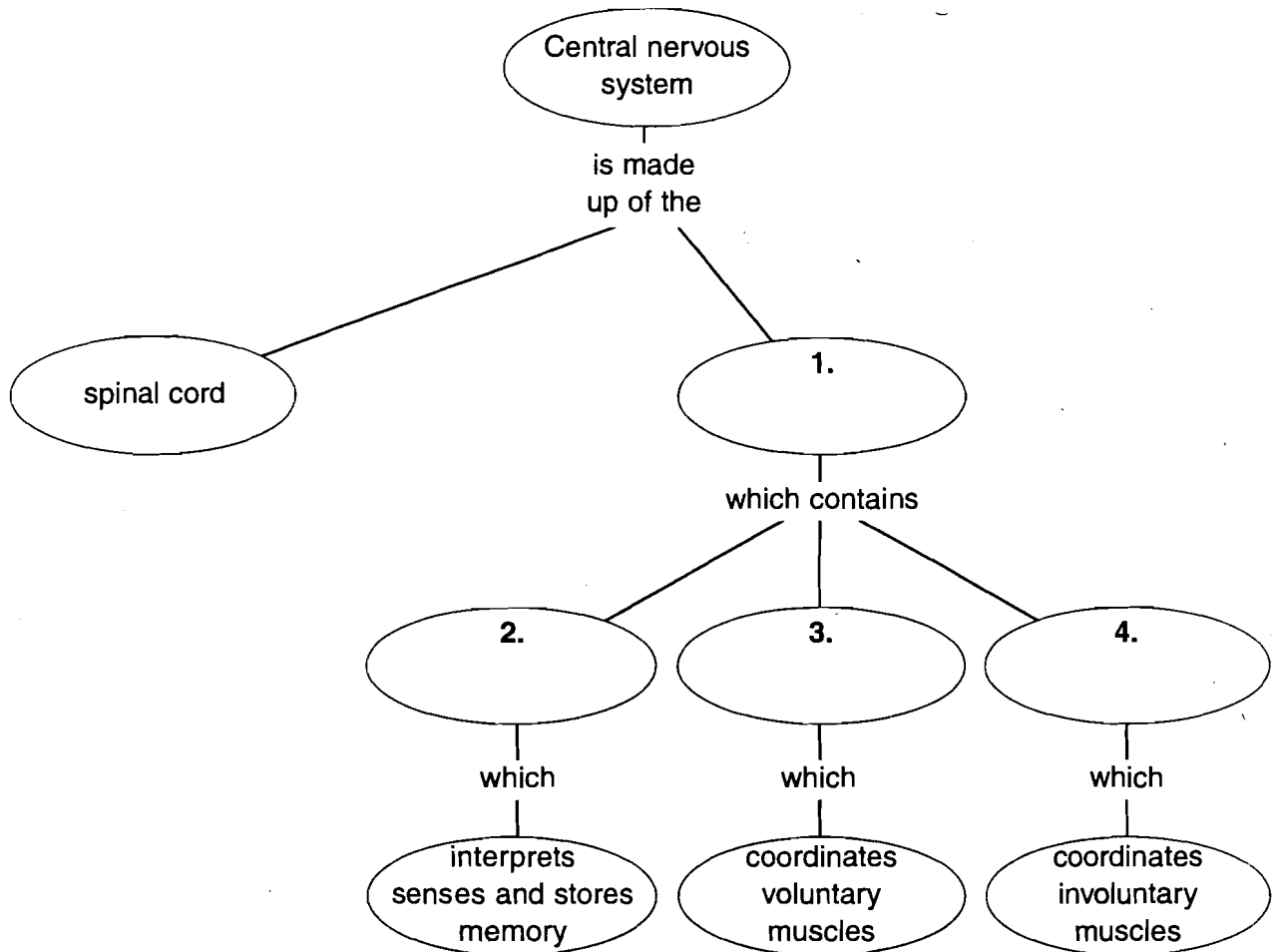
**Directions:** Complete the concept map using the terms in the list below.

brain

brain stem

cerebellum

cerebrum



**Directions:** Answer the following questions on the lines provided.

1. Which sense organ has rods and cones that help you see light and color?

\_\_\_\_\_

2. Which sense organ has olfactory cells that let you detect an odor?

\_\_\_\_\_