

**Directed Reading for  
Content Mastery**

**Overview  
Cells**

46

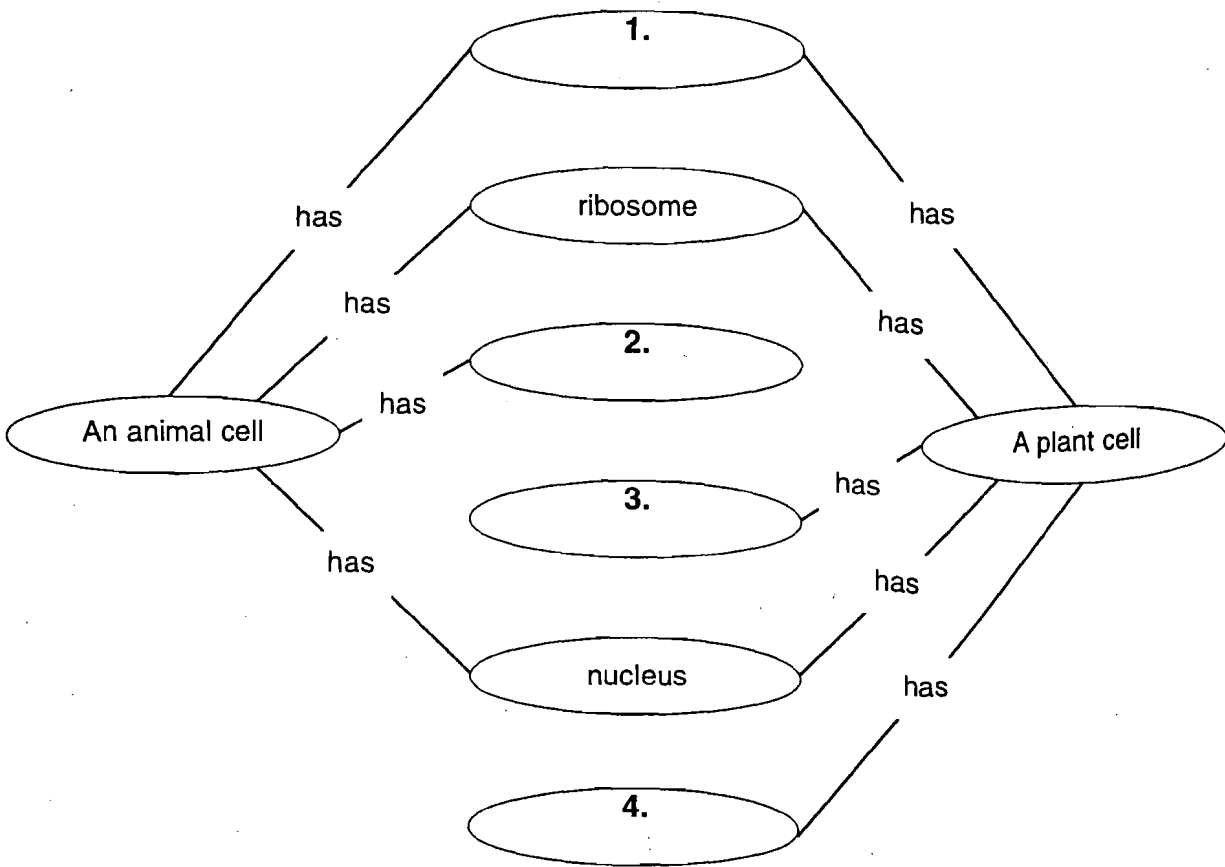
**Directions:** Complete the concept map using the terms listed below.

lysosome

chloroplast

mitochondria

cell wall



Meeting Individual Needs

**Directions:** Complete the following sentences using the terms listed below.

virus

cytoplasm

microscope

vaccine

cell theory

5. A \_\_\_\_\_ is often used to prevent viral diseases.
6. We need to use a \_\_\_\_\_ to see most cells.
7. Cells are filled with a gelatinlike mixture called \_\_\_\_\_.
8. A \_\_\_\_\_ is a disease-causing strand of hereditary material surrounded by a protein coating.
9. The \_\_\_\_\_ was developed from the observations and conclusions of several scientists.

**SECTION**  
**1**

**Reinforcement**

**Cell Structure**

**Directions:** Complete the following table using the correct cell part or function.

Cell part	Function
1.	gelatinlike mixture that flows inside the cell membrane
cell membrane	2.
3.	directs all cell activities
endoplasmic reticulum	4.
5.	makes protein
6.	releases energy stored in food
chloroplast	7.
cell wall	8.
9.	stores water, waste products, food, and other cellular materials
Golgi bodies	10.
11.	breaks down food molecules, cell wastes, and worn-out cell parts

Meeting Individual Needs

**Directions:** Study the following diagrams. Then identify each part by filling in the blanks in the center.

