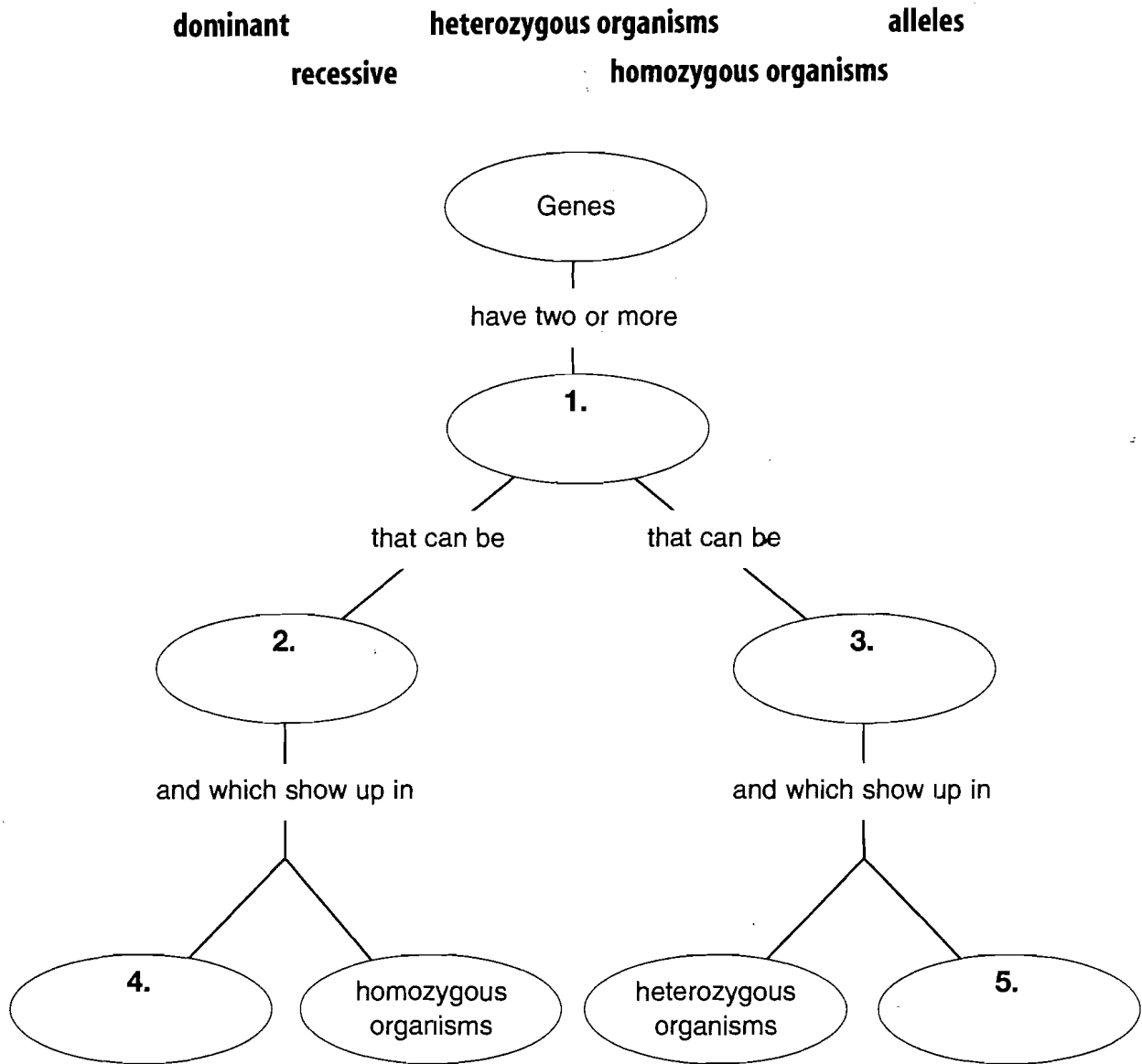




62

Directions: Complete the concept map using the terms in the list below.



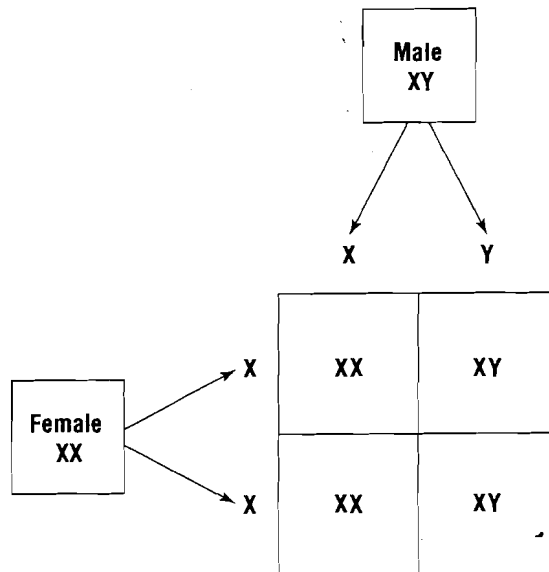
Directions: Use the words in the concept map to fill in the missing words in the following sentences.

6. The study of how traits are inherited through the interaction of _____ is the science of genetics.
7. An allele that is dominated, or covered up, by another allele is called _____.
8. Organisms with two alleles that are the same are called _____.

Directed Reading for
Content Mastery

Section 1 ■ Genetics
Section 2 ■ Genetics Since Mendel

Directions: This diagram shows the joining of human male (XY) and human female (XX) sex cells. Use the diagram to answer the questions below.



1. What do the letters X and Y stand for?

2. Which chromosome is found only in the male?

3. Which person has two X chromosomes?

4. According to the diagram, what percentage of the offspring is female?

5. Do you think it is possible to accurately predict all male offspring for a particular mating pair? Why or why not?
